



14 Elysium Park Close, Whitfield

Guide Price £350,000

DOMINIC MURPHY POWERED BY exp <sup>TM</sup> UK

@ dominic.murphy@exp.uk.com

🌐 dominicmurphy.exp.uk.com

☎ 01304 746 016

## 14 Elysium Park Close, Whitfield

A semi-detached property, nestled within Elysium Park Close, which is a small development between River and Whitfield, which in more recent years has been extended to creating a more living space.

**Please quote reference DM0223 when enquiring**

**Internally** - The property offers flexible living accommodation over two floors with generous proportioned rooms throughout. The ground floor boasts an entrance hall with doors into the cloakroom/wc, lounge and kitchen. The lounge is a generous size with plenty of dining area space, this leads to the downstairs bedroom, which forms part of the extension. The fitted kitchen offers a good range of storage units and worktop space for ones needs as well as a handy breakfast bar area. Off the kitchen is the utility room that again forms part of the extension. Upstairs there are three bedrooms, two doubles and a larger single. The master benefitting from en-suite facilities and there is also a three-piece bathroom to complete the floor.

**Outside** – There is a generous size private low maintenance garden, mainly patio tiled that leads to the side of the home too. It is a perfect area for children to play as well as being equipped for outdoor entertaining.

**Parking** – There is allocated parking for up to 2 vehicles, however there is plenty of parking for guests too.



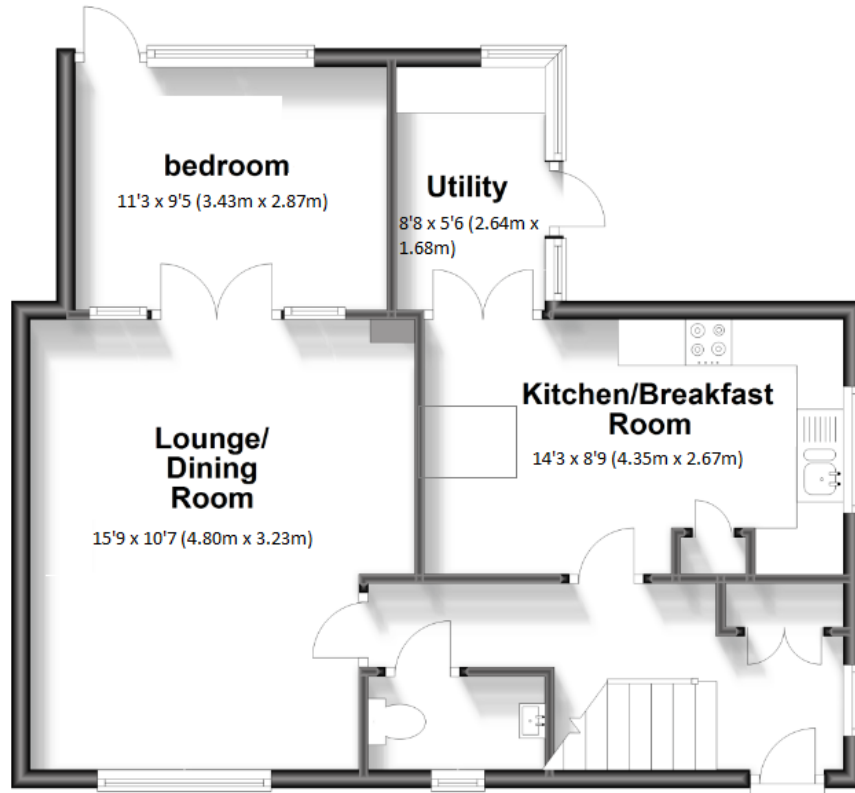






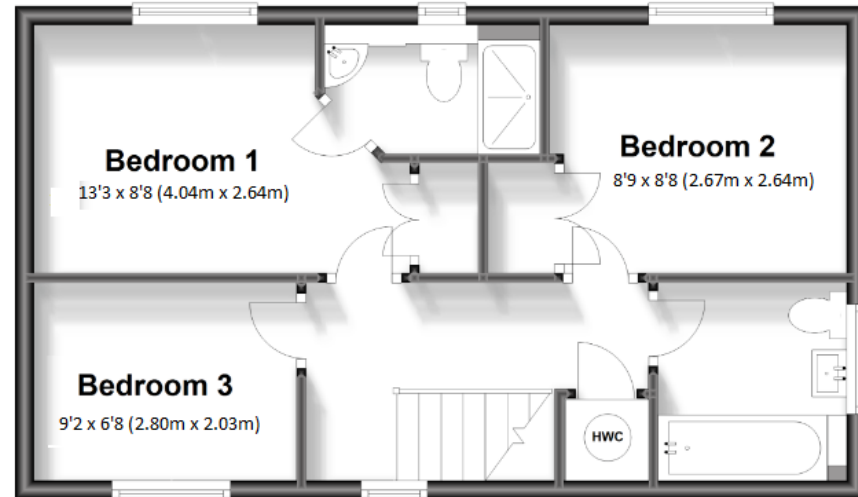
## Ground Floor

Approx. 56.6 sq. metres (609.5 sq. feet)



## First Floor

Approx. 42.3 sq. metres (455.2 sq. feet)



eXp World UK Ltd is a registered company at Level 37, 25 Canada Square, London, E14 5LQ.

Registered company number is 12016573. VAT Registration Number is 327 4120 29